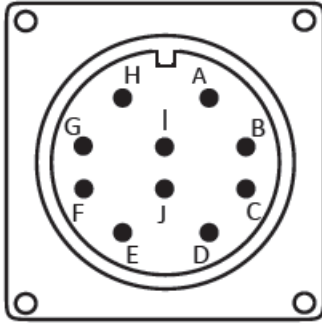




# Smart-Encoder™: Optical Incremental

## 3. Wiring

10- Pin M18 MS Connector Pin Out



10- Pin M12 MS Connector Pin Out

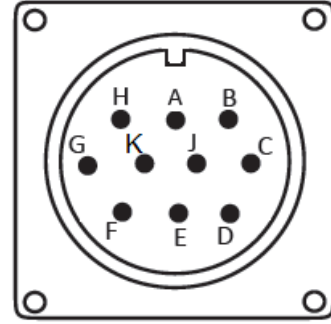


Table 1: 10DL (10 Pin Differential)

Connector Pin	Function	Cable Color Code
A	Signal A	Red
B	Signal B	Yellow
C	Signal Z	Green
D	Power Source (+V)	White
E	Not Connected	-
F	Com (-V)	White/Black
G	Case Ground	-
H	Signal $\overline{A}$	Red/Black
I	Signal $\overline{B}$	Yellow/Black
J	Signal $\overline{Z}$	Green/Black

Table 2: 10DM (10 Pin Differential)

Connector Pin	Function	Cable Color Code
A	Signal A	Red
B	Signal B	Yellow
C	Signal Z	Green
D	Power Source (+V)	White
E	Not Connected	-
F	Com (-V)	White/Black
G	Case Ground	-
H	Signal $\overline{A}$	Red/Black
K	Signal $\overline{B}$	Yellow/Black
J	Signal $\overline{Z}$	Green/Black

5- Pin M12 Connector Pin Out

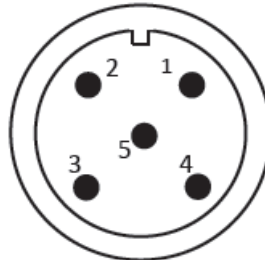


Table 3: 05SL (5 Pin Single Ended)

Pin	Function	Wire Color
1	Power Source (+V)	White
2	Signal B	Yellow
3	Com (-V)	White/Black
4	Signal A	Red
5	Signal Z	Green

## 8- Pin M12 Connector Pin Out

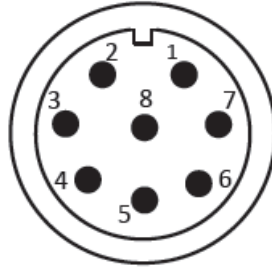


Table 4: 08DL (8 Pin Differential)		
Pin	Function	Wire Color
1	Signal A	Red
2	Power Source (+V)	White
3	Signal $\bar{A}$	Red/Black
4	Signal B	Yellow
5	Signal $\bar{B}$	Yellow/Black
6	Signal Z	Green
7	Com (-V)	White/Black
8	Signal $\bar{Z}$	Green/Black

## 7- Pin M16 Connector Pin Out

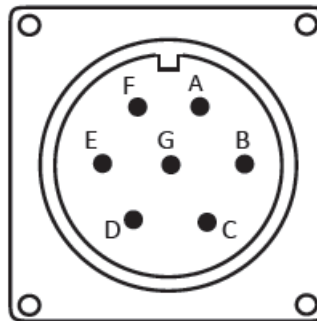


Table 5: 07DL (7 Pin Differential)		
Pin	Function	Wire Color
A	Signal A	Red
B	Signal B	Yellow
C	Signal $\bar{A}$	Red/Black
D	Power Source (+V)	White
E	Signal $\bar{B}$	Yellow/Black
F	Com (-V)	White/Black
G	Case Ground	-

## 4. Mounting

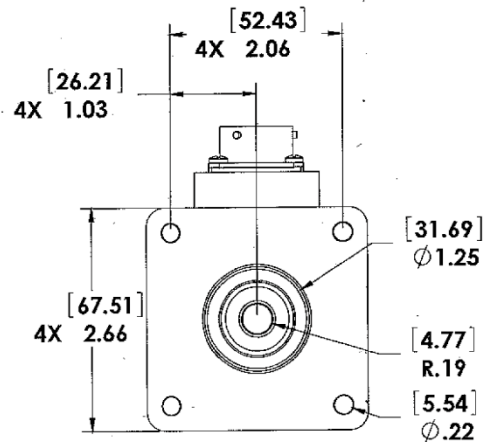
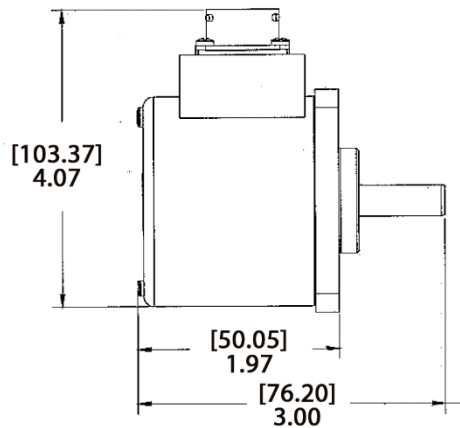
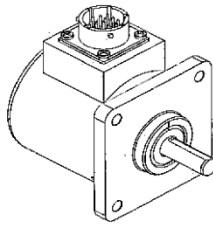
### Types of Mounting

Our A25 Encoder can be mounted up to three ways: servo-mount, flange mount or face mount. Typically, servo mounting can be achieved with traditional servo-clamps or through the four 6-32 mounting holes on the face of the resolver. The square Flange plate can be mounted using the 4 mounting Holes.

*Zero Reference* ( $\pm 5^\circ$ ): The position at which the flat on the shaft lines up with the screw in the case and the two mounting holes on the A25 Encoder's face plate.

### Mounting Dimensions

Optical Incremental (Flange)



Optical Incremental (Servo)

